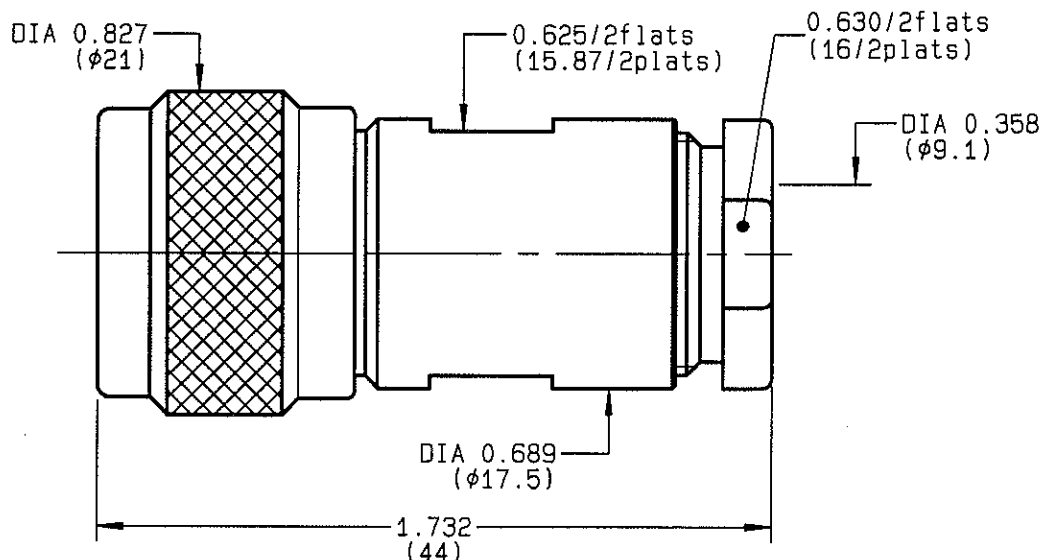


STRAIGHT PLUG CLAMP TYPE
CABLE C6 72018A1 + L3658A PACKAGING 50

R161.013.220
SERIES N



NOMINAL IMPEDANCE	50 Ω	CABLES :	
FREQUENCY RANGE	0-11 GHz		
TEMPERATURE RATING	-55/+155 °C		
V.S.W.R	NA + x F(GHz)Maxi		
RF INSERTION LOSS	NA \sqrt{F} (GHz) dB Maxi		
VOLTAGE RATING	850 Veff Maxi		
DIELECTRIC WITHSTANDING VOLTAGE	1500 Veff Mini		
INSULATION RESISTANCE	5000 M Ω Mini	OTHERS CHARACTERISTICS	
HERMETIC SEAL	NA Atm.cm ³ /s	CABLE RETENTION	200 N Mini
LEAKAGE (pressurized only)	NA	CENTER CONTACT RETENTION	
MECHANICAL DURABILITY	500 Cycles	Axial force - mating end	NA N Mini
WEIGHT	60 gr	Axial force - opposite end	NA N Mini
SPECIFICATION		Torque	NA cm.N Mini
		RECOMMENDED TORQUES	
		Mating	130 cm.N
		Panel nut	NA cm.N
		Clamp nut	500 cm.N

CONNECTOR PARTS	MATERIALS	FINISH	(all values are given) (in micrometers)
BODY	BRASS	BBR 2	
OUTER CONTACT	BRASS	BBR 2	
CENTER CONTACT	BRASS	GOLD 0.5 OVER NICKEL 2	
INSULATOR	PTFE	-	
GASKET	SILICONE RUBBER	-	
OTHERS PIECES	BRASS	BBR 2	

ISSUE	CREATION DATE	FILE PART-NUMBER
9820D00	05-MAY-93	92-0014-003



Connect to the future

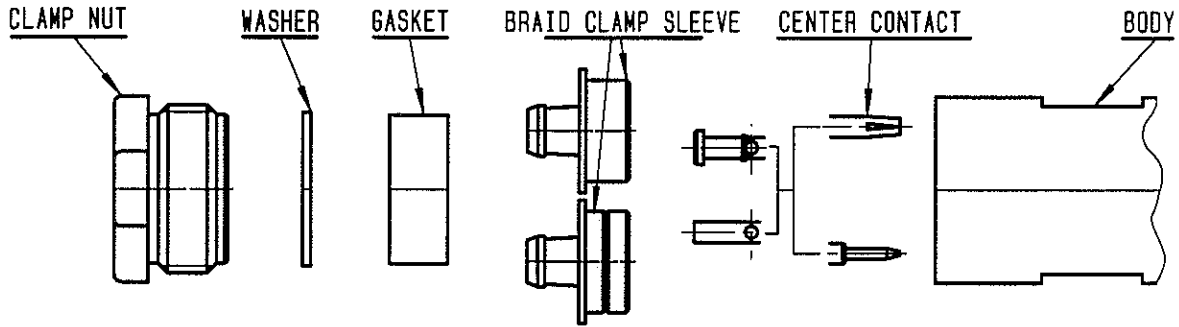
The information given here is subject to change without notice.
 Design changes may be in order to improve the product.

BONOMI

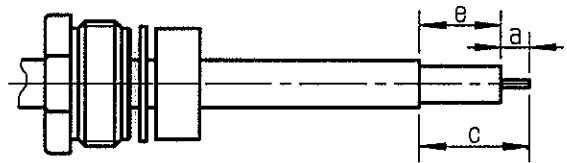


R161.013.220

ISSUE 9820D00 SERIES N

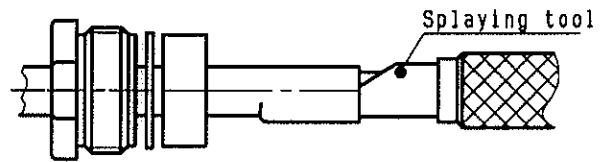


① Slide the clamp nut, the washer, and the gasket onto the cable .
Strip the dielectric and the inner conductor .

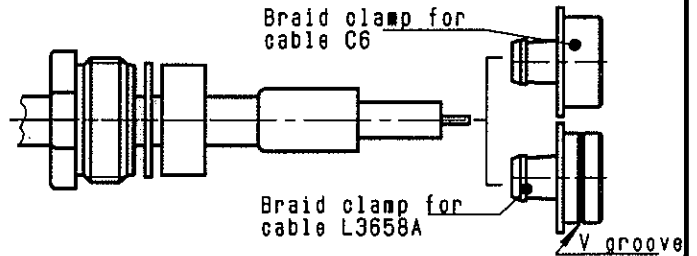


Stripping	a	b	c	d	e
inch	0.157 0		0.472 0		0.315
mm	4		12		8

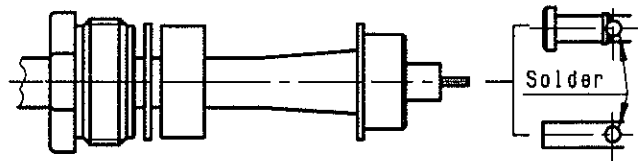
② Turn to slide the splaying tool under the foil .
Tool for the cable Videssat C6 72018A1 : R282 045 110
for the cable L3658A: R282 045 100



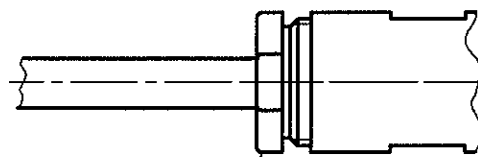
Slide the braid clamp sleeve between cable dielectric and braid .



③ Solder the cable inner conductor into center contact .



④ Screw sub-assembly into the connector body .
(recommended coupling torque 44.25 in.lb)



Hex. :0.63 /flats